



PDZ-RhoGEF Polyclonal Antibody

Catalog No	YP-Ab-16186
Isotype	IgG
Reactivity	Human;Mouse;Rat
Applications	WB;IHC
Gene Name	ARHGEF11
Protein Name	Rho guanine nucleotide exchange factor 11
Immunogen	The antiserum was produced against synthesized peptide derived from human ARHGEF11. AA range:198-247
Specificity	PDZ-RhoGEF Polyclonal Antibody detects endogenous levels of PDZ-RhoGEF protein.
Formulation	Liquid in PBS containing 50% glycerol, 0.5% BSA and 0.02% sodium azide.
Source	Polyclonal, Rabbit,IgG
Purification	The antibody was affinity-purified from rabbit antiserum by affinity-chromatography using epitope-specific immunogen.
Dilution	WB 1:500-2000;IHC-p 1:50-300
Concentration	1 mg/ml
Purity	≥90%
Storage Stability	-20°C/1 year
Synonyms	ARHGEF11; KIAA0380; Rho guanine nucleotide exchange factor 11; PDZ-RhoGEF
Observed Band	
Cell Pathway	Cytoplasm . Membrane . Translocated to the membrane upon stimulation.
Tissue Specificity	Ubiquitously expressed.
Function	domain:The poly-Pro region is essential for plasma membrane localization upon stimulation.,function:May play a role in the regulation of RhoA GTPase by guanine nucleotide-binding alpha-12 (GNA12) and alpha-13 (GNA13). Acts as guanine nucleotide exchange factor (GEF) for RhoA GTPase and may act as GTPase-activating protein (GAP) for GNA12 and GNA13.,similarity:Contains 1 DH (DBL-homology) domain.,similarity:Contains 1 PDZ (DHR) domain.,similarity:Contains 1 PH domain.,similarity:Contains 1 RGSL (RGS-like) domain.,subcellular location:Translocated to the membrane upon stimulation.,subunit:Interacts with GNA12 and GNA13 through the RGS domain. Interacts with RHOA, PLXNB1 and PLXNB2. Interacts with SLC1A6.,tissue specificity:Ubiquitously expressed.,
Background	Rho GTPases play a fundamental role in numerous cellular processes that are initiated by extracellular stimuli that work through G protein coupled receptors.



The encoded protein may form a complex with G proteins and stimulate Rho-dependent signals. A similar protein in rat interacts with glutamate transporter EAAT4 and modulates its glutamate transport activity. Expression of the rat protein induces the reorganization of the actin cytoskeleton and its overexpression induces the formation of membrane ruffling and filopodia. Two alternative transcripts encoding different isoforms have been described. [provided by RefSeq, Jul 2008],

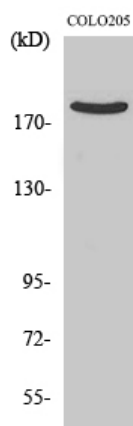
matters needing attention

Avoid repeated freezing and thawing!

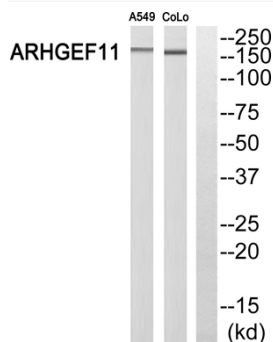
Usage suggestions

This product can be used in immunological reaction related experiments. For more information, please consult technical personnel.

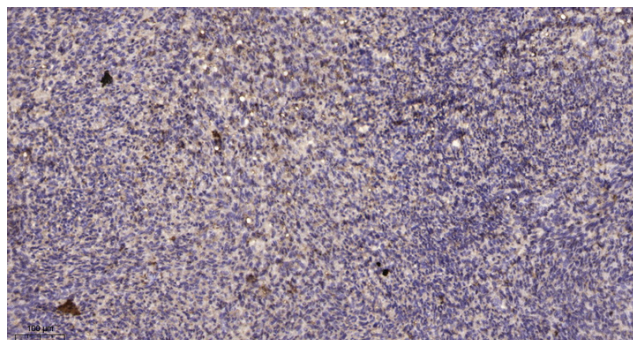
Products Images



Western Blot analysis of various cells using PDZ-RhoGEF Polyclonal Antibody



Western blot analysis of ARHGEF11 Antibody. The lane on the right is blocked with the ARHGEF11 peptide.



Immunohistochemical analysis of paraffin-embedded human uterus. 1, Antibody was diluted at 1:200(4° overnight). 2, Tris-EDTA,pH9.0 was used for antigen retrieval. 3,Secondary antibody was diluted at 1:200(room temperature, 45min).